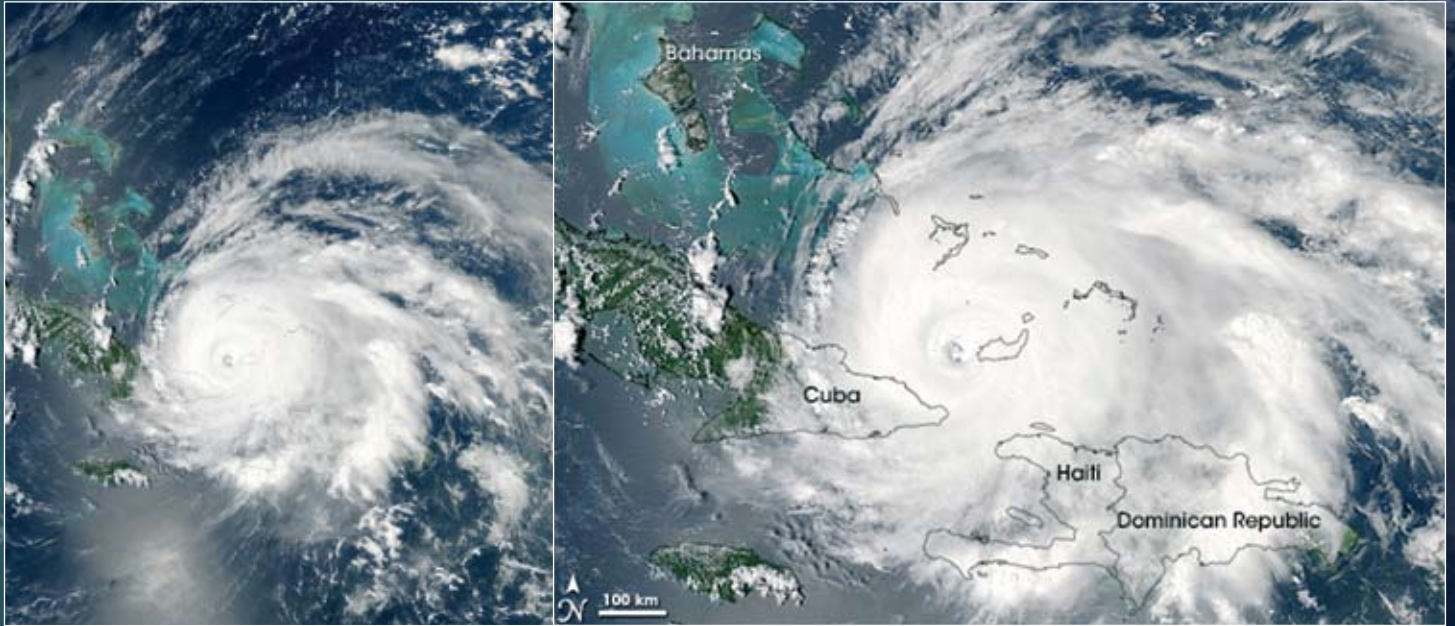


Tracking Ike

In September 2008, Hurricane Ike swept across the Caribbean and into Louisiana and Texas. NASA's satellites provided a range of images both during and after the event.

NASA's Aqua satellite photographed Ike as it was about to make landfall on Cuba. It was seen to be a Category 4 storm (winds up to 135 mph). The images below were made by combining visible and infrared data.

Jeff Schmaltz, NASA's MODIS Rapid Response Team



Right: The Terra satellite showed the aftermath of Ike. The brown strip along the coast, stretching up to 50 km inland, shows how the storm surge flooded coastal wetlands of Texas and Louisiana.

NASA



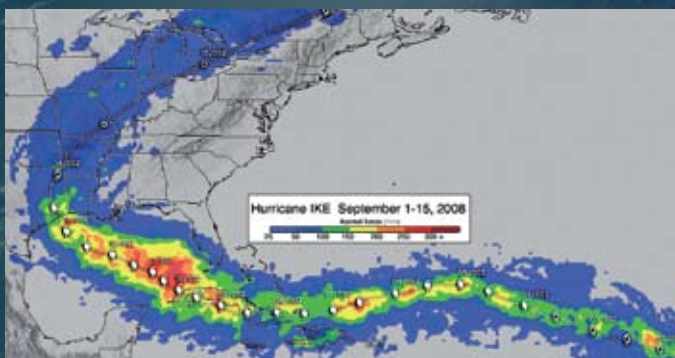
Hurricane Ike from the International Space Station.

Below: The Tropical Rainfall Measuring Mission satellite recorded the amount of rain falling from Ike. Some places received over 300 mm in under a day – that's half London's annual rainfall. The TRMM satellite uses radar and microwaves to detect rainfall.



Jeff Schmaltz, NASA's MODIS Rapid Response Team

SSA/NASA, Hal Pierce



Flooding in Galveston, Texas.