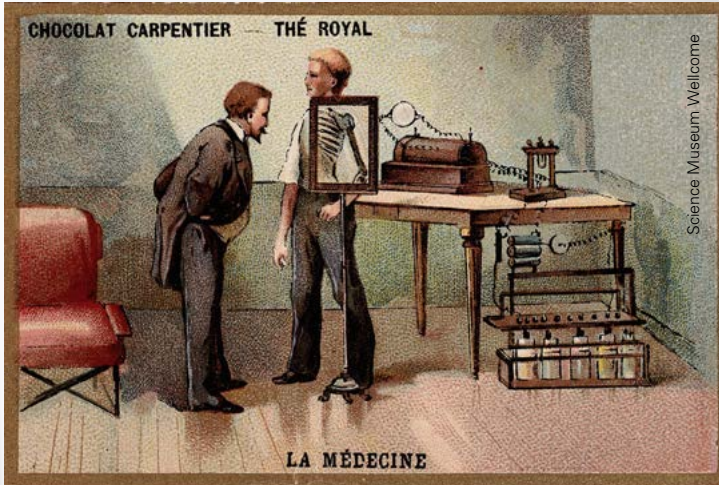
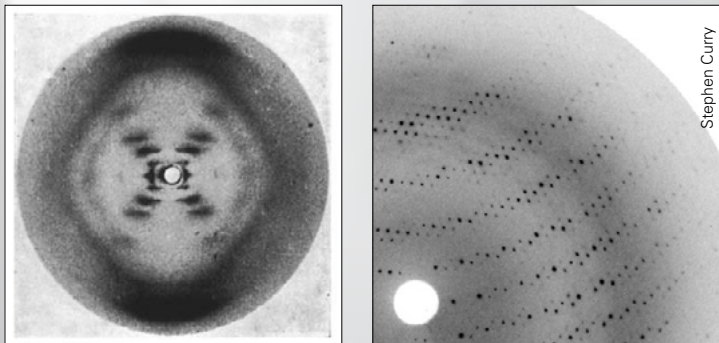


X-rays then and now

X-ray technology has improved greatly over the last century, allowing much greater detail to be observed.



X-rays were discovered by Wilhelm Roentgen in 1895. This image suggests the crude images which could be obtained at that time.



X-rays are used to determine the structures of molecules. The image on the left, made in 1953, was used to deduce the double helix structure of the DNA molecule. The modern image on the right has many spots of varying brightness, allowing the detailed structure of a complex protein molecule to be deduced.



A modern CT scanner can produce a 3-dimensional image of the patient's body.



In the 1930s, the Omniscope allowed the doctor to move the X-ray source to shine through different parts of the patient's body.



The skull of a hammerhead shark, showing the fine detail which can be achieved today.



A slice through a human head, obtained using a CT scanner.