

Making and using keys

Using a key - following the trail with buttercups (*page 1 of 2*) (*see booklet, page 25*)

Meadow buttercup



General information

The Meadow Buttercup belongs to the buttercup family (Ranunculaceae). This family contains a large number of well-known attractive garden plants such as Clematis, Delphinium, Pasque Flower and Anemone. Many members of the family contain chemical substances called alkaloids. These make the plants very poisonous.

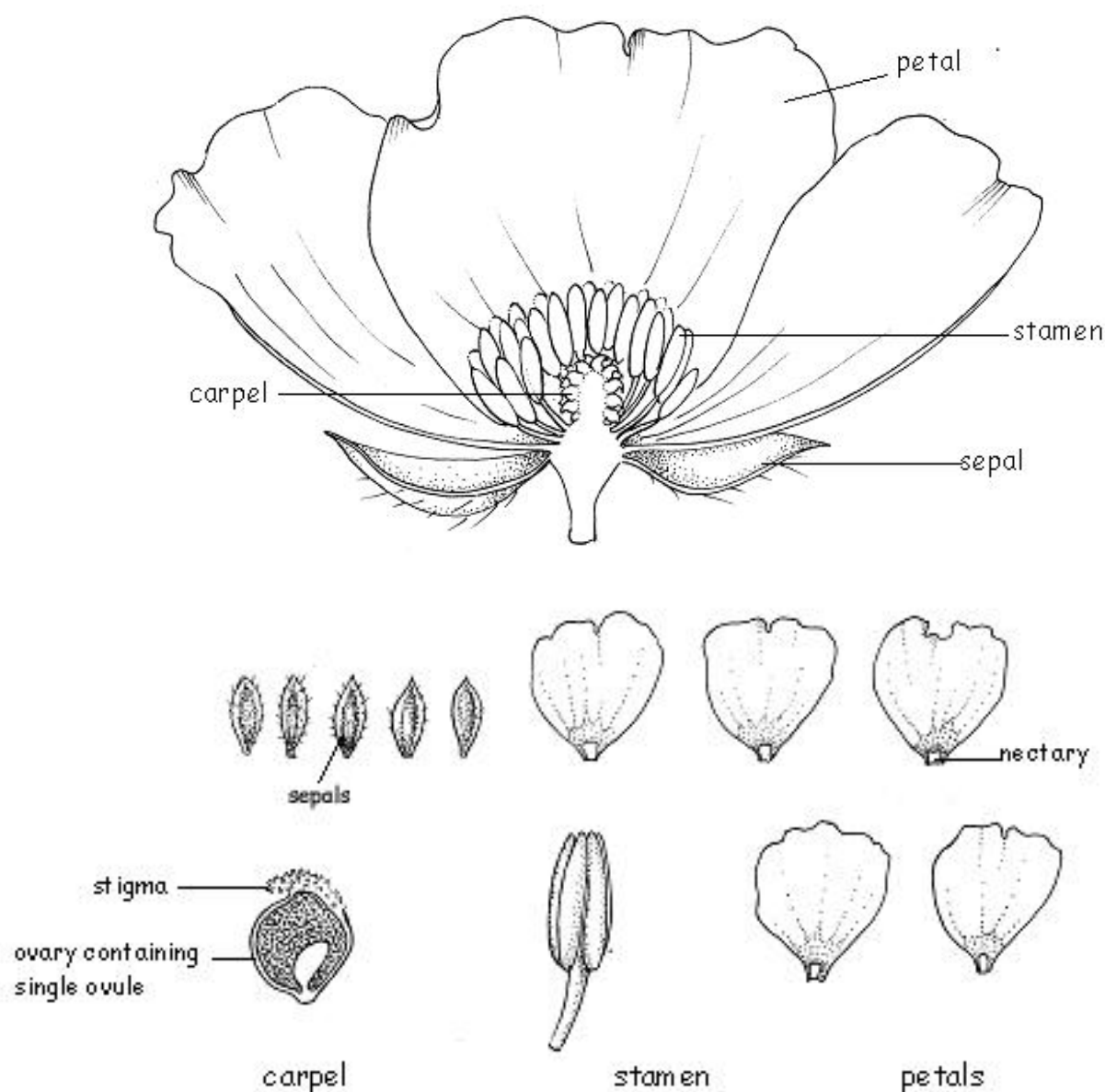
Making and using keys

Using a key - following the trail with buttercups (page 2 of 2) (see booklet, page 25)

A dissected buttercup

These drawings of a dissected buttercup display the floral parts and provide additional information that should help you when doing floral dissections with the children. For further drawings of dissected flowers (Wallflower and Garden Pea), [click here](#).

To revise how to dissect a flower, see booklet 2.1 - *Reproduction and life cycles Part 1: Parts of a flower*, page 5.



The structure of the flower

Sepals (5)

These are often yellow in the open flower.

Petals (5)

Bright yellow with a small pocket-shaped nectary at the base

Stamens (numerous)

Carpels (numerous)

The female part of the flower (the gynoecium) is made up of a large number of carpels which are not fused together. Each has its own stigma and ovary. The ovary contains a single ovule.