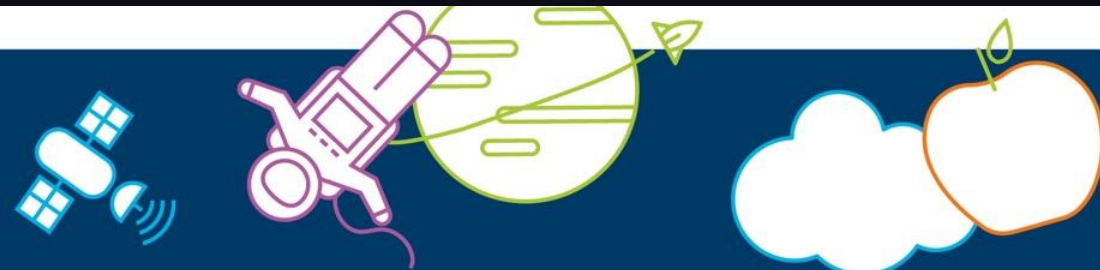
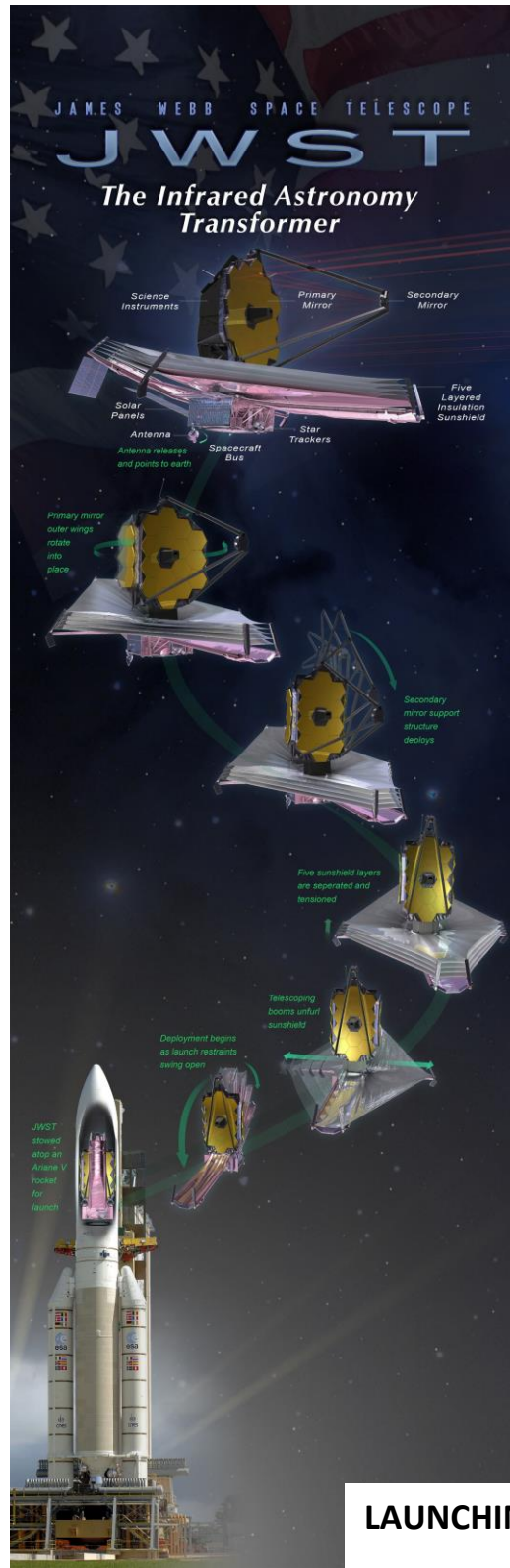


Photograph  
courtesy of NASA





Credit: NASA

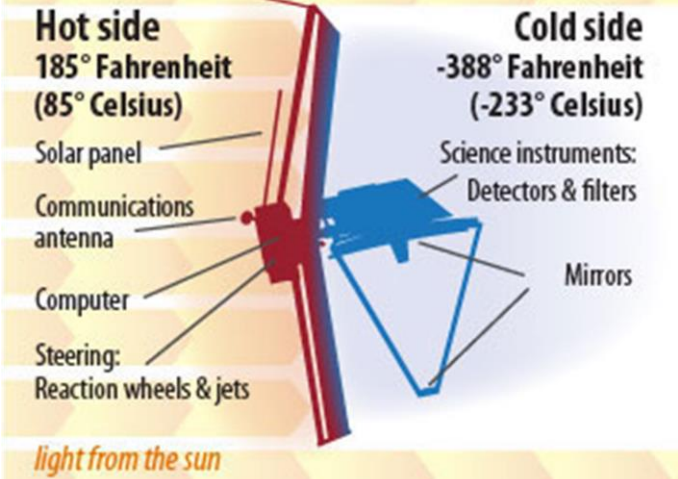


**CLEAN ROOMS** must be dust free and engineers kept comfortable, safe and happy!

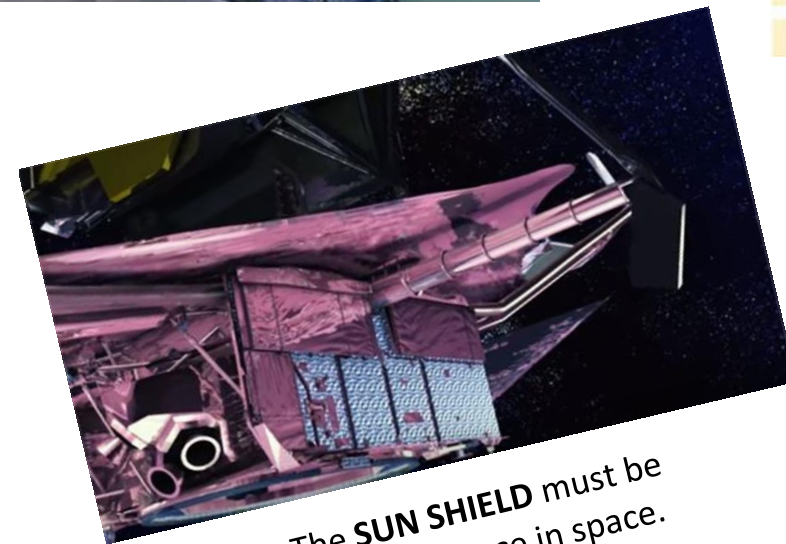


The hexagonal sections of the **PRIMARY MIRROR** must be capable of moving to focus the light perfectly.

### The Two Sides of the Webb Telescope



**TEMPERATURE** is critical. Infrared telescopes must be kept very cold and won't work if they are heated by the Sun.



The **SUN SHIELD** must be extended once in space.



**LAUNCHING** requires suitable structures and folding of the telescope.



**TRANSPORTING** the telescope must be safe and very carefully done!

